

# R&S®RTx-PK1: APPLICATION BUNDLE

For R&S®RTB2000, R&S®RTM3000 and R&S®RTA4000 oscilloscopes



## Customize your oscilloscope with the PK1 application bundle

- The R&S®RTx-PK1 application bundle unlocks the rich functionality of Rohde & Schwarz oscilloscopes
- For a very attractive price, it offers all the software options – I<sup>2</sup>C, SPI, UART/RS-232/RS-422/RS-485, CAN, LIN, history and segmented memory, frequency response analysis (Bode plot) – as well as the arbitrary waveform generator and pattern generator hardware option
- On R&S®RTM3000 and R&S®RTA4000, it additionally includes triggering and decoding of serial buses – I<sup>2</sup>S/LJ/RJ/TDM, MIL-STD-1553 and ARINC 429 – as well as the spectrum analysis and power analysis options

Key specifications		R&S®RTB-PK1	R&S®RTM-PK1	R&S®RTA-PK1
Trigger and decode	I <sup>2</sup> C / SPI	-K1	-K1	-K1
	UART/RS-232/RS-422/RS-485	-K2	-K2	-K2
	CAN / LIN	-K3	-K3	-K3
	I <sup>2</sup> S / LJ / RJ / TDM	-	-K5	-K5
	MIL-STD-1553	-	-K6	-K6
	ARINC 429	-	-K7	-K7
History and segmented memory		-K15	-K15	Standard
Spectrum analysis and spectrogram		-	-K37	-K37
Power analysis		-	-K31	-K31
Frequency response analysis (Bode plot)		-K36	-K36	-K36
Arbitrary waveform and 4 bit pattern generator		-B6	-B6	-B6

Benefits	
Full functions	You get the full functionality of all options for the R&S®RTB2000, R&S®RTM3000 and R&S®RTA4000 oscilloscopes at an excellent price
Attractive price	The R&S®RTx-PK1 application bundle offers a saving of <b>60% to 80%</b> compared to purchasing each option separately



Mess- und Prüftechnik. Die Experten.

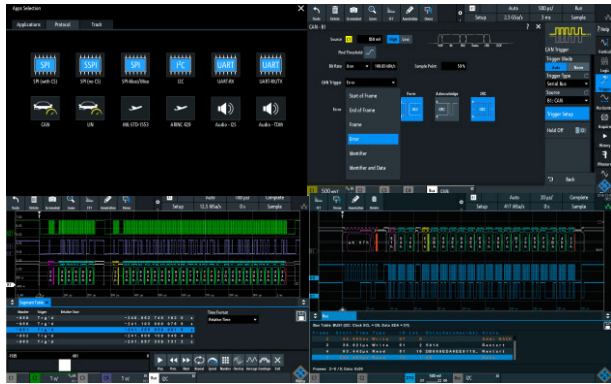
**Ihr Ansprechpartner /  
Your Partner:**

**dataTec AG**

E-Mail: [info@datatec.eu](mailto:info@datatec.eu)

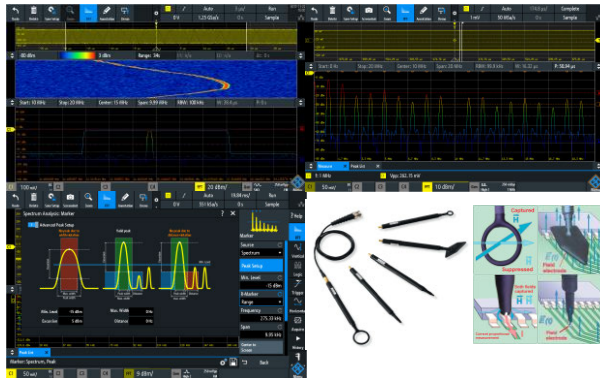
>>> [www.datatec.eu](http://www.datatec.eu)

## Serial protocol triggering and decoding options



Protocols such as I<sup>2</sup>C, SPI and CAN/LIN frequently transfer control messages between integrated circuits. The R&S®RTB2000, R&S®RTM3000 and R&S®RTA4000 offer versatile options for protocol-specific triggering and decoding of serial interfaces.

## Spectrum analysis and spectrogram



Difficult-to-find faults often result from the interaction between time and frequency signals. The R&S®RTx-K37 spectrum analysis and spectrogram option quickly finds such errors. Parameters such as center frequency and resolution bandwidth can be easily adapted to the specific measurement task. The oscilloscope automatically selects the relevant time domain settings.

## History and segmented memory



Analyze past acquisitions before the error occurred. The history function ensures that previous waveforms stored in memory can always be accessed. A trigger timestamp allows time correlation. You can view all saved signals and analyze them with tools such as zoom, measurement, math and spectrum analysis functions.

## Frequency response analysis (Bode plot)



Easily and quickly analyze low frequency response on your oscilloscope with the R&S®RTx-K36 frequency response analysis (Bode plot) option. This option uses the oscilloscope's built-in waveform generator to create stimulus signals ranging in frequency from 10 Hz up to 25 MHz. Measuring the ratio of DUT signal input and output at each test frequency, the oscilloscope plots gain and phase logarithmically.

## Model configuration information

Base model	Order No.
R&S®RTB2002 oscilloscope, 70 MHz, 2 channels	1333.1005.02
R&S®RTB2004 oscilloscope, 70 MHz, 4 channels	1333.1005.04
R&S®RTM3002 oscilloscope, 100 MHz, 2 channels	1335.8794.02
R&S®RTM3004 oscilloscope, 100 MHz, 4 channels	1335.8794.04
R&S®RTA4004 oscilloscope, 200 MHz, 4 channels	1335.7700.04
Application bundle	Order No.
R&S®RTB-PK1 consists of the following options: -K1, -K2, -K3, -K15, -K36, -B6	1333.1092.02
R&S®RTM-PK1 consists of the following options: -K1, -K2, -K3, -K5, -K6, -K7, -K15, -K31, -K36, -K37, -B6	1335.8942.02
R&S®RTM-PK1US consists of the following options: -K1, -K2, -K3, -K5, -K6, -K7, -K15, -K31, -K36, -K37, -B6	1335.9190.02
R&S®RTA-PK1 consists of the following options: -K1, -K2, -K3, -K5, -K6, -K7, -K31, -K36, -K37, -B6	1335.7775.02
R&S®RTA-PK1US consists of the following options: -K1, -K2, -K3, -K5, -K6, -K7, -K31, -K36, -K37, -B6	1335.7998.02

All options can be retrofitted

Rohde & Schwarz GmbH & Co. KG | Europe, Africa, Middle East +49 89 4129 12345 | North America 1 888 TEST RSA (1 888 837 87 72)

Latin America +1 410 910 79 88 | Asia Pacific +65 65 13 04 88 | China +86 800 810 82 28 / +86 400 650 58 96

[www.rohde-schwarz.com](http://www.rohde-schwarz.com) | [customersupport@rohde-schwarz.com](mailto:customersupport@rohde-schwarz.com)

R&S® is a registered trademark of Rohde & Schwarz GmbH & Co. KG | PD 3608.2671.32 | Version 01.10 | May 2020 (ai)

Trade names are trademarks of the owners | R&S®RTx-PK1: application bundle | Data without tolerance limits is not binding

Subject to change | © 2020 Rohde & Schwarz GmbH & Co. KG | 81671 Munich, Germany



Ihr Ansprechpartner /  
Your Partner:

dataTec AG

E-Mail: [info@datatec.eu](mailto:info@datatec.eu)

>>> [www.datatec.eu](http://www.datatec.eu)

Mess- und Prüftechnik. Die Experten.