

MODEL 62000H SERIES

KEY FEATURES

- Power range : 5KW/10KW/15KW/18KW
- Current range : 0~375A
- Voltage range : 0~1800V/2000V(series)
- AC input voltage range :
200/220Vac, 380/400Vac , 440/480Vac
- High power density (18KW in 3U)
- Easy master/slave parallel & series operation
- Precision V&I measurements
- High-speed programming
- Voltage & current slew rate control
- Digital encoder knobs, keypad and function keys
- Current sharing operation
- Voltage ramp function
(time range: 5 ms ~ 99 hours)
- Auto sequencing programming:
10 programs/100 sequences
- OVP, current limit, thermal protection
- Standard analog programming interface
- Support CAN/Ethernet/USB/RS232/RS485/
GPIB/APG interfaces
- Remote output ON/OFF (I/P)
- Remote sense line drop compensation
- LabView and Labwindows
- Solar array simulation function
- Shade I-V curve simulation
- I-V curve programming:
10 program/100 I-V files
- CE Certified



PROGRAMMABLE DC POWER SUPPLY MODEL 62000H SERIES

Chroma's new 62000H Series of programmable DC power supplies offer many unique advantages for telecom, automated test system & integration, industrial, battery charge & simulation for hybrid cars and solar panel simulation. These advantages include high power density of 18KW in 3U, precision readback of output current and voltage, output trigger signals as well as the ability to create complex DC transient waveforms to test device behavior for spikes, drops, and other voltage deviations.

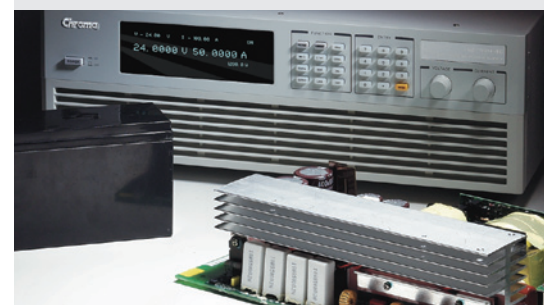
The 62000H Series includes different models ranging from 5KW to 18KW, with current range up to 375A and voltage range up to 1800V. The 62000H can easily parallel up to 11 units capable of 198KW with current sharing for bulk power applications, for example, battery bank simulation of 450V/150A/67.5KW for electric vehicle and military use.

There are 100 user programmable input status on the front panel for automated test

application and life cycle ON/OFF test. In addition, the 62000H has a 16 bit digital control with bright vacuum fluorescent display readout.

The 62000H series DC power supplies are very easy to operate either from the front panel keypad or from the remote controller via CAN/Ethernet/USB/RS232/RS485/GPIB/APG. Its compact size with 3U only can be stacked on a bench in a standard rack without any difficulty.

Another unique capability of the 62000H supplies is their ability to create complex DC transient waveforms. This capability allows devices to be tested to DC voltage dropouts, spikes and other voltage variations making them an ideal choice for aerospace device testing, inverter testing and other devices which will experience voltage interrupts. Applications include DC/DC Converter & Inverter voltage drop test, engine start-up simulation, battery automated charging, electronic product life cycle test, etc.



dataTec

Mess- und Prüftechnik. Die Experten.

**Ihr Ansprechpartner /
Your Partner:**

dataTec AG

E-Mail: info@datatec.eu

>>> www.datatec.eu



HIGH POWER DENSITY 18KW IN 3U PROGRAMMABLE DC POWER SUPPLY

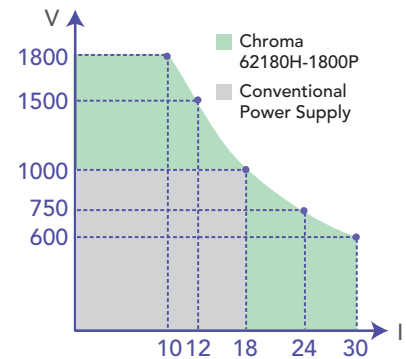
The 62000H Series supplies offer a high power density envelop of maximum 18KW in 3U, deliver low output noise and ripple, excellent line and load regulation, and fast transient response. With wide range of voltage (30V~1800V), current (30A), suitable for every part of your manufacturing process from design to production testing.



WIDE OPERATING REGION FOR OUTPUT (62000H-P SERIES)

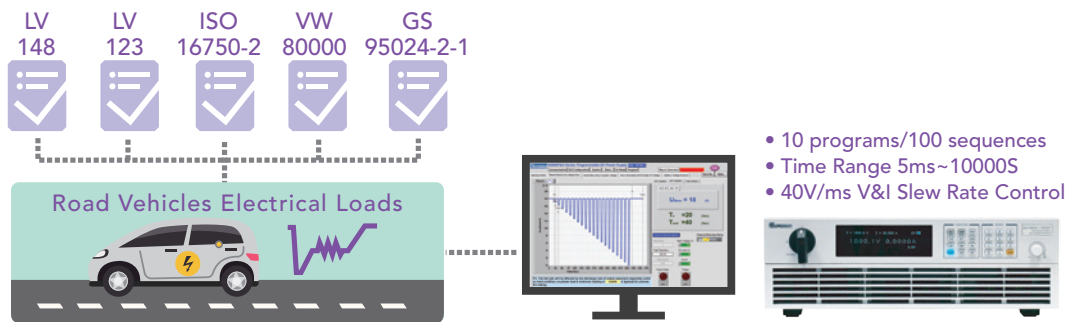
The 62000H-P Series are equipped with active PFC low-current harmonic feed to grid, which can save power consumption and power system configuration under high-power testing. The 62000H-P has a wide operating region of output for users to operate in a broad voltage and current range at rated power that is not limited to a single operating point of full power. It is suitable for testing the products with diverse specifications such as electronic components, server power, battery application products, and automotive electronic components, etc. For instance, the model 62180H-1800P with 1800V/30A/18kW output can be operated flexibly in various combinations as shown in the figure.

Operating Region



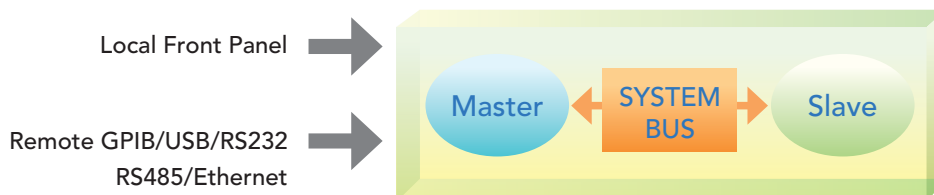
AUTOMOTIVE ELECTRICAL CHARACTERISTICS SIMULATION

The 62000H Series DC power supply has a high-speed CV dynamic response with controllable slew rate up to 40V/ms. It can be applied to many automotive regulations for electrical characteristics testing, including LV148, LV123, ISO 16750-2, VW 80000, GS 95024-2-1, etc., to perform dynamic voltage testing on automotive components and electrical systems during start-up and operation. Moreover, the graphical softpanel allows users to test with one click to quickly verifying the product stability, and saves the development timeline. (For detailed support items, please refer to Chroma's official website - Chroma Softpanel for Model 62000P & 62000H Series).



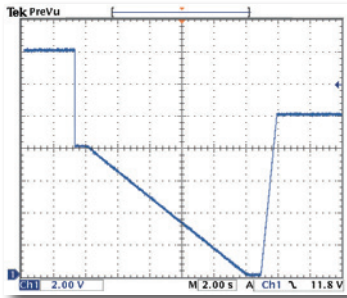
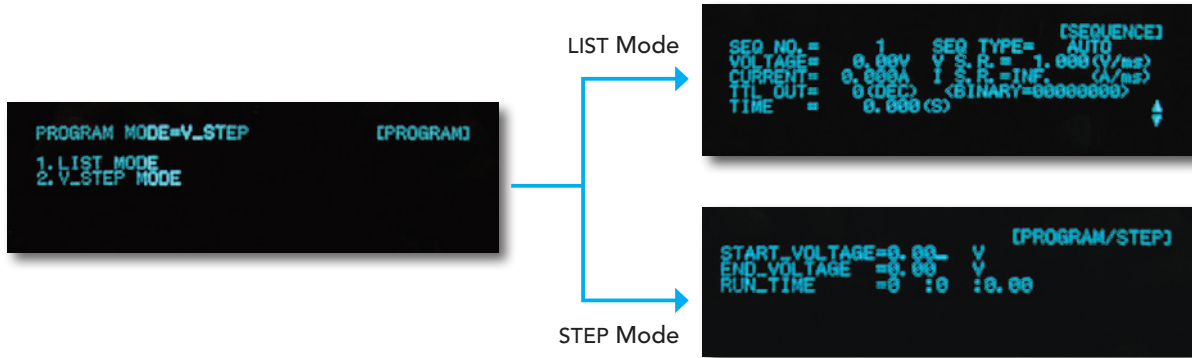
MASTER / SLAVE PARALLEL & SERIES OPERATION

When high power is required, it is common to connect two or more power supplies in parallel or series. The 62000H Series supplies have a smart Master / Slave control mode making series/parallel operation fast and simple. In this mode, the master scales values and downloads data to slave units so programming is simple and current sharing automatic.

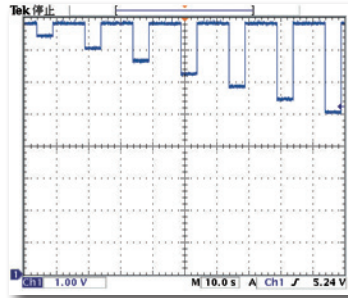


PROGRAMMING SEQUENCES APPLICATIONS

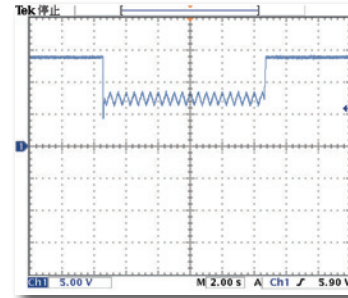
The 62000H Series supplies' LIST and STEP modes allows for auto sequencing function. The LIST mode allows for 100 user programmable sequences with time settings ranging from 5ms to 15000s and voltage / current slew rate control. The STEP mode allows for setting start, end voltage and run time of 10ms to 99 hours for automated test applications. Applications include DC/DC Converter & Inverter voltage dropout testing, engine start-up simulation, battery automated charging, battery voltage dropout simulation, product life cycle testing and avionics testing.



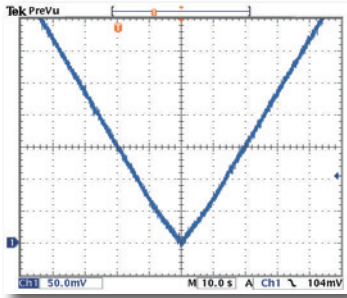
Battery Voltage Dropout



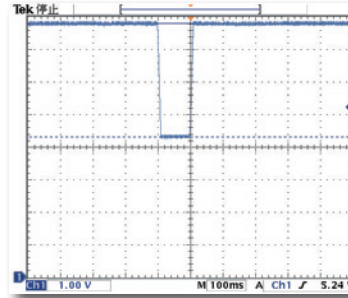
Reset Behavior at Voltage Drop of ISO 16750-2



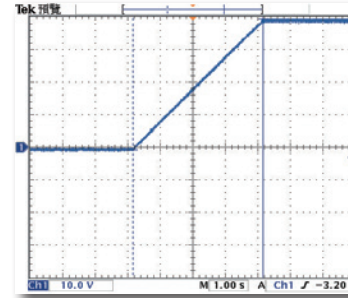
Engine Starting Profile of ISO 16750-2



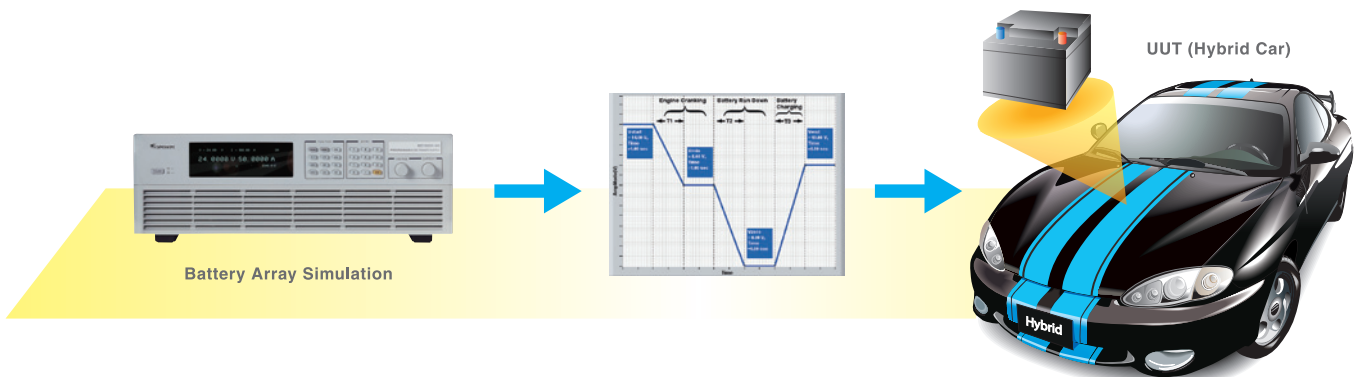
Battery Voltage Slow Decrease & Increase



Telecom Converter Sag Testing

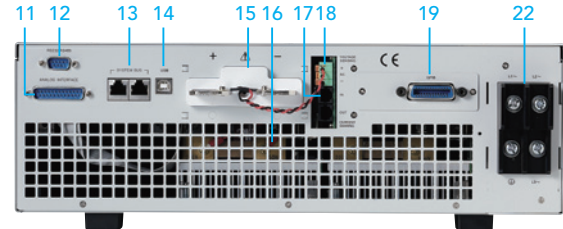
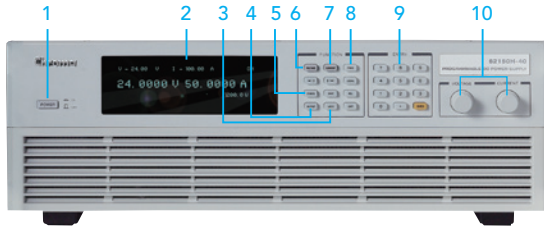


Output Voltage Slew Rate Control

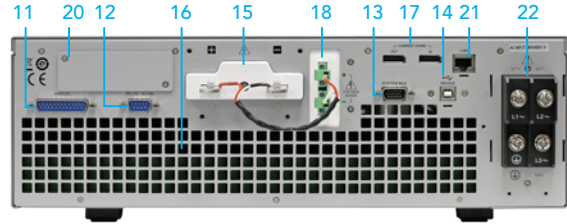
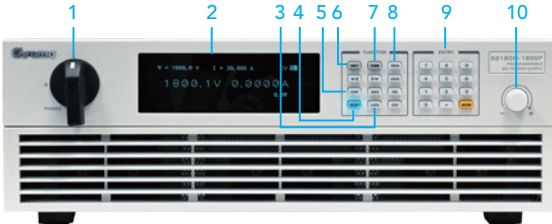


PANEL DESCRIPTION

5KW/10KW/15KW MODEL



18KW MODEL



- | | |
|---|---|
| <ol style="list-style-type: none"> 1. POWER Switch 2. VFD Display
Display setting, readings and operating status 3. LOCK Key
Lock all settings 4. OUTPUT Key
Enable or disable the output 5. CONFIG Key
Set the system configuration 6. VOLTAGE Key
Set the output voltage 7. CURRENT Key
Set the output current 8. PROG Key
Program the sequence 9. NUMERIC Key
Set the data 10. ROTARY Key
Adjust the V&I and set the parameter | <ol style="list-style-type: none"> 11. Analog programming interface
For analog level to program and monitor output voltage & current 12. RS-232 or RS-485 Interface (alternative) 13. System Bus
For master/slave parallel and series control 14. USB Interface 15. OUTPUT Terminal
Connect the output cable to a UUT 16. System Fan
With fan speed control 17. Current Sharing Terminal
Connect the cable to slave unit 18. Sense Terminal
Connect the UUT for voltage compensation 19. GPIB or ETHERNET Interface
(Option for 2kW/5kW/10kW/15kW models) 20. GPIB Interface (Option for 18kW model) 21. Ethernet Interface (Standard for 18kW model) 22. AC Input Terminal |
|---|---|

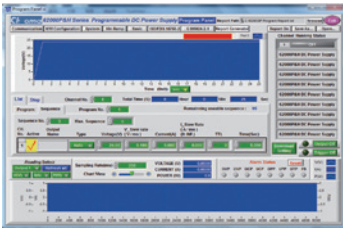
ORDERING INFORMATION

Power Rating	62000H Series Programmable DC Power Supply
2KW	62020H-150S : Programmable DC Power Supply 150V/40A/2KW with Solar Array Simulation
5KW	62050H-40 : Programmable DC Power Supply 40V/125A/5KW
	62050H-450 : Programmable DC Power Supply 450V/11.5A/5KW
	62050H-600 : Programmable DC Power Supply 600V/8.5A/5KW
	62050H-600S : Programmable DC Power Supply 600V/8.5A/5KW with Solar Array Simulation
10KW	62075H-30 : Programmable DC Power Supply 30V/250A/7.5KW
	62100H-30 : Programmable DC Power Supply 30V/375A/11KW
	62100H-40 : Programmable DC Power Supply 40V/250A/10KW
	62100H-100P*3 : Programmable DC Power Supply 100V/250A/10KW
	62100H-450 : Programmable DC Power Supply 450V/23A/10KW
	62100H-600 : Programmable DC Power Supply 600V/17A/10KW
	62100H-600S : Programmable DC Power Supply 600V/17A/10kW with Solar Array Simulation
15KW	62100H-1000 : Programmable DC Power Supply 1000V/10A/10KW
	62150H-40 : Programmable DC Power Supply 40V/375A/15KW
	62150H-100P*3 : Programmable DC Power Supply 100V/375A/15KW
	62150H-450 : Programmable DC Power Supply 450V/34A/15KW
	62150H-600 : Programmable DC Power Supply 600V/25A/15KW
	62150H-600S : Programmable DC Power Supply 600V/25A/15KW with Solar Array Simulation
18KW	62150H-1000 : Programmable DC Power Supply 1000V/15A/15KW
	62150H-1000S : Programmable DC Power Supply 1000V/15A/15kW with Solar Array Simulation
	62180H-1800P : Programmable DC Power Supply 1800V/30A/18KW
Options	62180H-1800S : Programmable DC Power Supply 1800V/30A/18KW with Solar Array Simulation
	A620024 : GPIB Interface for 2kW/5kW/10kW/15kW models (Factory installed)
	A620025 : Ethernet Interface for 62000H series (Factory installed)
	A620026 : Rack Mounting kit for 62000H series
	A6200039 : GPIB Interface for 12kW/18kW models
	A632013*4 : CAN interface for 62180H-1800P

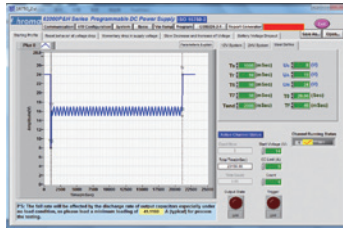
Note *1 : All models output power are available for 200/220Vac, 380/400Vac and 440/480Vac (600V/1000V models) line voltage.

Note *2 : Call for availability. (30V/40V/100V/450V for 200/220 Vac and 440/480 Vac line voltage)

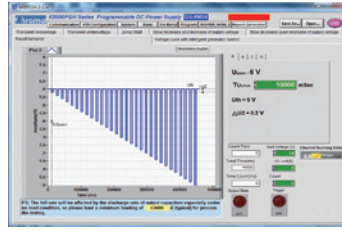
Note *3 : 62000H-P models include active PFC and constant power envelop operation. Note *4 : Call for availability.



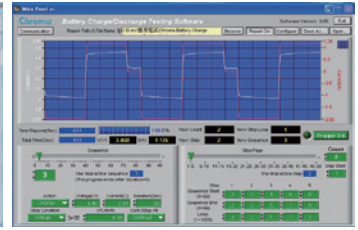
Program Sequences Function



ISO 16750-2 Standard for Voltage Transient Test



GS-95024 Standard for Voltage Transient Test



Battery Charge Test

ELECTRICAL SPECIFICATIONS - 1

Model	62075H-30	62050H-40	62050H-450	62050H-600	62100H-30	62100H-40	62100H-100P	62100H-450	62100H-600
Output Ratings									
Output Voltage	0-30V	0-40V	0-450V	0-600V	0-30V	0-40V	0-100V	0-450V	0-600V
Output Current	0-250A	0-125A	0-11.5A	0-8.5A	0-375A	0-250A	0-250A	0-23A	0-17A
Output Power	7500W	5000W	5000W	5000W	11250W	10000W	10000W	10000W	10000W
Line Regulation									
Voltage	±0.01% F.S.								
Current	±0.05% F.S.								
Load Regulation									
Voltage	±0.02% F.S.								
Current	±0.1% F.S.								
Voltage Measurement									
Range	6V / 30V	8V / 40V	90V / 450V	120V / 600V	6V / 30V	8V / 40V	20V/100V	90V/450V	120V/600V
Accuracy	0.05% + 0.05% F.S.								
Current Measurement									
Range	50A / 250A	25A / 125A	2.3A / 11.5A	1.7A / 8.5A	75A / 375A	50A / 250A	50A / 250A	4.6A/23A	3.2A/17A
Accuracy	0.1% + 0.1% F.S.								
Output Noise & Ripple									
Voltage Noise (P-P)	60mV	60mV	300mV	350mV	60mV	60mV	100mV	300mV	350mV
Voltage Ripple (rms)	15mV	15mV	450mV	600mV	15mV	15mV	20mV	450mV	600mV
Current Ripple (rms)	100mA	50mA	20mA	15mA	150mA	100mA	100mA	40mA	30mA
OVP Adjustment Range									
Range	0-110% programmable from front panel, remote digital inputs								
Accuracy	±1% of full-scale output								
Programming Response Time									
Rise Time: Full Load	6ms	8ms	60ms	60ms	6ms	8ms	20ms	60ms	60ms
Rise Time: No Load	6ms	8ms	60ms	60ms	6ms	8ms	20ms	60ms	60ms
Fall Time: Full Load	6ms	8ms	60ms	60ms	6ms	8ms	20ms	60ms	60ms
Fall Time: 10% Load	100ms	100ms	250ms	250ms	100ms	100ms	625ms	250ms	250ms
Fall Time: No Load	1s	1s	2.5s	2.5s	1s	1s	2.5s	2.5s	2.5s
Slew Rate Control									
Voltage slew rate range	0.001V/ms ~ 5V/ms	0.001V/ms ~ 5V/ms	0.001V/ms ~ 7.5V/ms	0.001V/ms ~ 10V/ms	0.001V/ms ~ 5V/ms	0.001V/ms ~ 5V/ms	0.001V/ms ~ 5V/ms	0.001V/ms ~ 7.5V/ms	0.001V/ms ~ 10V/ms
Current slew rate range	0.001A~1A/ms, or INF								
Min. transition time	0.5ms								
Transient Response Time	Recovers within 1ms to +/- 0.75% of steady-state output for a 50% to 100% or 100% to 50% load change(1A/μs)								
Efficiency (Typical)	0.87	0.87	0.87	0.87	0.87	0.87	0.91	0.87	0.87
Drift (30 minutes)									
Voltage			0.04% of Vmax					0.01% of Vmax	0.04% of Vmax
Current			0.06% of Imax					0.06% of Imax	0.06% of Imax
Drift (8 hours)									
Voltage			0.02% of Vmax					0.005% of Vmax	0.02% of Vmax
Current			0.04% of Imax					0.005% of Imax	0.04% of Imax
Temperature Coefficient									
Voltage			0.04% of Vmax/°C					0.005% of Vmax/°C	0.04% of Vmax/°C
Current			0.06% of Imax/°C					0.01% of Imax/°C	0.06% of Imax/°C

ELECTRICAL SPECIFICATIONS -2

Model	62100H-1000	62150H-40	62150H-100P	62150H-450	62150H-600	62150H-1000	62180H-1800P
Output Ratings							
Output Voltage	0-1000V	0-40V	0-100V	0-450V	0-600V	0-1000V	0 ~ 1800V
Output Current	0-10A	0-375A	0-375A	0-34A	0-25A	0-15A	0 ~ 30A
Output Power	10000W	15000W	15000W	15000W	15000W	15000W	18000W
Line Regulation							
Voltage	±0.01% F.S.						
Current	±0.05% F.S.						
Load Regulation							
Voltage	±0.05% F.S.	±0.02% F.S.	±0.02% F.S.	±0.02% F.S.	±0.02% F.S.	±0.05% F.S.	±0.05% F.S.
Current	±0.1% F.S.						±0.2% F.S.
Voltage Measurement							
Range	200V/1000V	8V/40V	20V/100V	90V/450V	120V/600V	200V/1000V	1100V / 1800V
Accuracy	0.05% + 0.05%F.S.						
Current Measurement							
Range	4A/10A	75A/375A	75A/375A	6.8A/34A	5A/25A	6A/15A	15A / 30A
Accuracy	0.1% + 0.1%F.S.						
Output Noise & Ripple							
Voltage Noise(P-P)	2550mV	60mV	100mV	300mV	350mV	2550mV	3500 mV
Voltage Ripple(rms)	1500mV	15mV	20mV	450mV	600mV	1500mV	750 mV
Current Ripple(rms)	180mA	150mA	100mA	60mA	45mA	270mA	250mA
OVP Adjustment Range							
Range	0-110% programmable from front panel, remote digital inputs						
Accuracy	±1% of full-scale output						
Programming Response Time							
Rise Time:Full Load	25ms (30% F.S. CC Load)	8ms	20ms	60ms	60ms	25ms (50% F.S. CC Load)	90ms
Rise Time:No Load	25ms	8ms	20ms	60ms	60ms	25ms	90ms
Fall Time: Full Load	25ms (50% F.S. CC Load)	8ms	20ms	60ms	60ms	25ms (50% F.S. CC Load)	90ms
Fall Time: 10% Load	120ms (10% F.S. CC Load)	100ms	625ms	250ms	250ms	80ms (10% F.S. CC Load)	625ms
Fall Time: No Load	3s	1s	2.5s	2.5s	2.5s	3s	2.5s
Slew Rate Control							
Voltage slew rate range	0.001Vms~ 40V/ms	0.001V/ms ~5V/ms	0.001V/ms ~5V/ms	0.001V/ms ~7.5V/ms	0.001V/ms ~10V/ms	0.001V/ms ~40V/ms	0.001V/ms ~ 20V/ms
Current slew rate range	0.001A~0.1A/ms, or INF						
Min. transition time	0.5ms						
Transient Response Time	Recovers within 1ms to +/- 0.75% of steady-state output for a 50% to 100% or 100% to 50% load change (1A/μs)						1.5ms *6
Efficiency (Typical)	0.85	0.87	0.92	0.87	0.87	0.87	0.9
Drift (30 minutes)							
Voltage	0.04% of Vmax		0.01% of Vmax		0.04% of Vmax		
Current	0.06% of Imax		0.06% of Imax		0.06% of Imax		
Drift (8 hours)							
Voltage	0.02% of Vmax		0.005% of Vmax		0.02% of Vmax		
Current	0.04% of Imax		0.005% of Imax		0.04% of Imax		
Temperature Coefficient							
Voltage	0.04% of Vmax/°C		0.005% of Vmax/°C		0.04% of Vmax/°C		
Current	0.06% of Imax/°C		0.01% of Vmax/°C		0.06% of Imax/°C		

Note *1 : Please specify GPIB or Ethernet Interface (alternative) at time of order.

Note *2 : All models output power are available for 200/220Vac, 380/400Vac and 440/480Vac (600V/1000V models) line voltage.

Note *3 : Call for availability. (30V/40V/100V/450V for 200/220 Vac and 440/480 Vac line voltage)

GENERAL SPECIFICATIONS

Programming & Measurement Resolution					
Voltage (Front Panel)	0.1mV / 1mV / 10mV / 100mV (VO < 10V / 40V / 600V / 1800V)				
Current (Front Panel)	0.1mA / 1mA / 10 mA (IO < 10A / 100A / 1000A)				
Voltage (Digital Interface)	0.002% of Vmax				
Current (Digital Interface)	0.002% of Imax				
Voltage (Analog Interface)	0.04% of Vmax				
Current (Analog Interface)	0.04% of Imax				
Remote Interface					
Analog programming	Standard				
USB	Standard				
RS-232	Standard				
RS485	Standard				
GPIB	Optional				
Ethernet	Optional (Standard for 62180H-1800P)				
System BUS(CAN)	Standard for master/slave control				
Programming Accuracy					
Voltage (Front Panel and Digital Interface)	0.1% of Vmax / 0.05% of Vmax (62000H-100P models)				
Current (Front Panel and Digital Interface)	0.3% of Imax / 0.2% of Imax (62000H-100P/1800P models)				
Voltage (Analog Interface)	0.2% of Vmax				
Current (Analog Interface)	0.3% of Imax				
GPIB Command Response Time					
Vout setting	GPIB send command to DC source receiver <20ms				
Measure V & I	Under GPIB command using Measure <25ms				
Analog Interface (I/O)					
Voltage and Current Programming inputs (I/P)	0-10Vdc / 0-5Vdc / 0-5k ohm / 4-20 mA of F.S.				
Voltage and Current monitor output (O/P)	0-10Vdc / 0-5Vdc / 4-20mA of F.S.				
External ON/OFF (I/P)	TTL:Active Low or High(Selective)				
DC_ON Signal (O/P)	Level by user define. (Time delay = 1 ms at voltage slew rate of 10V/ms.)				
CV or CC mode Indicator (O/P)	TTL Level High=CV mode ; TTL Level Low= CC mode				
OTP Indicator (O/P)	TTL: Active Low				
System Fault indicator(O/P)	TTL: Active Low				
Auxiliary power supply(O/P)	Nominal supply voltage : 12Vdc / Maximum current sink capability: 10mA				
Safety interlock(I/P)	Time accuracy: <100ms				
Remote inhibit(I/P)	TTL: Active Low				
Series & Parallel Operation	Master / Slave control for 10 units (Series: two units / Parallel: ten units)				
Auto Sequencing(List Mode)					
Number of program	10				
Number of sequence	100				
Dwell time Range	5ms - 15000S				
Trig. Source	Manual / Auto / External				
Auto Sequencing (Step Mode)					
Start voltage	0 to Full scale				
End voltage	0 to Full scale				
Run time	10ms - 99hours				
Input Specification					
AC input voltage 3phase , 3 wire + ground	3Ø 200~220Vac ± 10% VLL ; 3Ø 380~400Vac ± 10% VLL ; 3Ø 440~480Vac ± 10% VLL				
AC frequency range	47-63 Hz				
Max Current (each phase)	200/220 Vac	5KW Model : 39A	10KW Model : 69A	15KW Model : 93A	--
	380/400 Vac	5KW Model : 22A	10KW Model : 37A/30A *5	15KW Model : 50A/30A *5	18KW Model : 37A
	440/480 Vac	5KW Model : 19A	10KW Model : 32A	15KW Model : 44A	--
General Specification					
Maximum Remote Sense Line Drop Compensation	30V/40V model : 5% of full scale voltage per line(10% total) 100V model : 2.5% of full scale voltage per line (5% total) ; >100V model : 2% of full scale voltage per line (4% total) 1000V model : 1% of full scale voltage per line (2% total) ; 1800V model : 0.5% of full scale voltage per line (1% total)				
Operating Temperature Range	0°C ~ 50°C *1				
Storage Temperature Range	-40°C ~ +85°C *7				
Dimension (HxWxD)	132.8 x 428 x 610 mm / 5.23 x 16.85 x 24.02 inch ; 18KW model : 132.8 x 428 x 660 mm / 5.23 x 16.85 x 25.99 inch				
Weight	5KW Model : Approx. 23 kg / 50.66 lbs ; 10KW Model : Approx. 29 kg / 63.88 lbs *2 *3 15KW Model : Approx. 35 kg / 77.09 lbs *4 ; 18KW Model : Approx. 40 kg / 88.19 lbs				

Note*1 : The operating temperature range is 0°C ~ 40°C for Model 62100H-1000/62150H-1000/62180H-1800P.

Note*2 : The weight is approx. 35kg/77.09 lbs for Model 62100H-1000.

Note*3 : The weight is approx. 38kg/83.77 lbs for Model 62150H-100P.

Note*4 : The max. input current (each phase) is 20A for Model 62100H-100P.

Note*5 : The max. input current (each phase) is 30A for Model 62100H-100P/62150H-100P.

Note*6 : Recovers within 1.5ms to ± 1.5% of steady-state output for a 50% to 75% or 75% to 50% load change (0.1A/ms)

Note*7 : Storage temperature range is -25°C ~ 70°C for Model 62180H-1800P.

ELECTRICAL SPECIFICATIONS WITH SOLAR ARRAY SIMULATION

Model	62020H-150S	62050H-600S	62100H-600S	62150H-600S	62150H-1000S	62180H-1800S
Output Ratings						
Output Voltage	0 ~ 150V	0 ~ 600V	0 ~ 600V	0 ~ 600V	0 ~ 1000V	0 ~ 1800V
Output Current	0 ~ 40A	0 ~ 8.5A	0 ~ 17A	0 ~ 25A	0 ~ 15A	0 ~ 30A
Output Power	2000W	5000W	10000W	15000W	15000W	18000W
Line Regulation						
Voltage						± 0.01% F.S.
Current						± 0.05% F.S.
Load Regulation						
Voltage						± 0.05% F.S.
Current						± 0.2% F.S.
Voltage Measurement						
Range	60V / 150V	120V / 600V	120V / 600V	120V / 600V	200V / 1000V	1100V / 1800V
Accuracy	0.05% + 0.05%F.S.					
Current Measurement						
Range	16A / 40A	3.4A / 8.5A	6.8A / 17A	10A / 25A	6A / 15A	15A / 30A
Accuracy	0.1% + 0.1%F.S.					
Output Noise&Ripple						
Voltage Noise(P-P)	450 mV	1500 mV	1500 mV	1500 mV	2550 mV	3500 mV
Voltage Ripple(rms)	65 mV	650 mV	650 mV	650 mV	1950 mV	750 mV
Current Ripple(rms)	80 mA	150 mA	300 mA	450 mA	270mA	250mA
OVP Adjustment Range						
Range	0 ~ 110% programmable from front panel, remote digital inputs.					
Accuracy	± 1% of full-scale output					
Programming Response Time						
Rise Time: 50%F.S. CC Load	10ms (6.66A loading)	30ms	30ms	30ms	25ms	90ms
Rise Time: No Load	10ms	30ms	30ms	30ms	25ms	90ms
Fall Time: 50%F.S. CC Load	10ms (6.66A loading)	30ms	30ms	30ms	25ms	90ms
Fall Time: 10%F.S. CC Load	83ms (1.33A loading)	100ms	100ms	100ms	80ms	625ms
Fall Time: No Load	300ms	1.2s	1.2s	1.2s	3s	2.5s
Slew Rate Control						
Voltage Slew Rate Range	0.001V/ms~15V/ms	0.001V/ms~20V/ms	0.001V/ms~20V/ms	0.001V/ms~20V/ms	0.001V/ms~40V/ms	0.001V/ms~20V/ms
Current Slew Rate Range	0.001A/ms ~ 1A/ms, or INF	0.001A/ms ~ 0.1A/ms, or INF	0.001A/ms ~ 0.1A/ms, or INF	0.001A/ms ~ 0.1A/ms, or INF	0.001A/ms ~ 0.1A/ms, or INF	0.001A/ms ~ 0.1A/ms, or INF
Minimum Transition Time	0.5ms					
Transient response time	Recovers within 1ms to ± 0.75% of steady-state output for a 50% to 100% or 100% to 50% load change (1A/us)					1.5ms *4
Efficiency	0.77(Typical)					0.9(Typical)
Programming & Measurement Resolution						
Voltage (Front Panel)	10 mV	10 mV	10 mV	10 mV	100mV	100mV
Current (Front Panel)	1mA	1mA	1mA	1mA	1mA	10mA
Voltage (Digital Interface)	0.002% of Vmax					
Current (Digital Interface)	0.002% of Imax					
Voltage (Analog Interface)	0.04% of Vmax					
Current (Analog Interface)	0.04% of Imax					
Programming Accuracy						
Voltage (Front Panel and Digital Interface)	0.1% of Vmax					
Current (Front Panel and Digital Interface)	0.3% of Imax					0.2% of Imax
Voltage (Analog Interface)	0.2% of Vmax					
Current (Analog Interface)	0.3% of Imax					
Parallel Operation*2	Master / Slave control via CAN for 10 units up to 150kW *1 (Parallel: ten units)					up to 198kW *3
Auto Sequencing (I-V program)						
Number of program	10					
Number of sequence	100					
Dwell time Range	1s ~ 15,000S					
Trig. Source	Manual / Auto					

Note*1 : Max. Power is 20kW for 62020H-150S.

Note*2 : There is parallel mode for DC power supply when the I-V curve function is enabled.

Note*3 : For higher power > 198kW, please call for availability.

Note*4 : Recovers within 1.5ms to ±1.5% of steady-state output for a 50% to 75% or 75% to 50% load change (0.1A/ms)

Get more product & distributor information in Chroma ATE APP



iOS



Android

Search Keyword

62000H



**Ihr Ansprechpartner /
Your Partner:**

dataTec AG

E-Mail: info@datatec.eu

>>> www.datatec.eu

EUROPE
CHROMA ATE EUROPE B.V.
Morsestraat 32, 6716 AH
Ede, The Netherlands
T +31-318-648282
F +31-318-648288
www.chromaeu.com
sales@chromaeu.com

CHROMA GERMANY GMBH
Südtiroler Str. 9, 86165,
Augsburg, Germany
T +49-821-790967-0
F +49-821-790967-600
www.chromaeu.com
sales@chromaeu.com

Mess- und Prüftechnik. Die Experten.

62000H Series-E-201906-1000