

NI FlexLogger


Fast, Flexible Data Acquisition

The Benefits of FlexLogger

FlexLogger enables quick sensor configuration and mixed signal data logging—no programming required. FlexLogger is available in a *free* Lite edition or full-featured Professional edition.

- Configure and validate DAQ measurements
- Log data to standard formats
- Monitor tests with configurable dashboards


For additional basic test automation and integration of custom measurements, choose FlexLogger Professional.



Mess- und Prüftechnik. Die Experten.

**Ihr Ansprechpartner /
Your Partner:**

dataTec AG
E-Mail: info@datatec.eu
datatec.eu



Authorized
Distributor

"FlexLogger makes it easier to troubleshoot and verify that the raw data from different sensors are correct before I start my test. This helps shorten test development by saving time typically wasted on redoing configurations."

- Andy Tarman
CNH Industrial

Build Flexible, Scalable Systems with FlexLogger

Configuring Your System

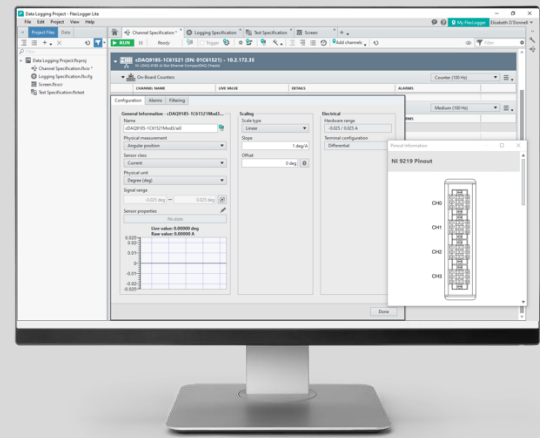
- Broad Mix of Channel Support—FlexLogger supports AI/AO and DIO signals in the PXI, USB and C Series form factor. It also supports the configuration and synchronization of automotive signals, such as, CAN and CCP.
- High-Channel Performance—FlexLogger is optimized to support over 2000 channels in a single project. Configurable using spreadsheet import functionality.
- Calculated Channels—Perform basic arithmetic on measurement channels and log results to file alongside raw data.

Accelerating Your Data Visualization

- Alarms and Events—Set alarms that monitor single channels or groups to be notified of unexpected behavior. Make quick, informed decisions.
- Dashboards—FlexLogger includes interactive visualization tools for monitoring tests with drag-and-drop charts, graphs and controls.
- File Configuration—Store data according to your test needs. Built-in functionality can partition files according to file size or time specifications during for long-running tests. Save to multiple locations to reduce risk of data loss.

Extending Your Capabilities

- FlexLogger Plug-ins—Extend the analysis and control capabilities of FlexLogger by configuring plug-ins that connect to LabVIEW.
- Python API—Automate and control FlexLogger using the open-source Plug-in Development Kit. Start, stop and monitor tests from your Python environment.
- SystemLink Integration—Share information with colleagues by logging data to SystemLink tags and uploading files directly to SystemLink.
- Analyze in DIAdem—Utilize advanced analysis functions and visualization tools on your test results in DIAdem. No additional changes needed to your project.



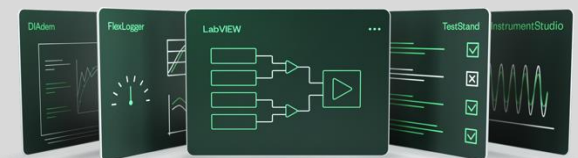
Select Your FlexLogger Edition

FlexLogger Lite [Free!]

- Recommended for manual data logging and monitoring with NI data acquisition (DAQ) hardware.
- Download at ni.com/flexlogger

FlexLogger Professional

- Recommended for applications that require more complete validation capabilities or additional I/O.
- Part Number: 784271-35



Get FlexLogger and LabVIEW Plus More in the LabVIEW+ Suite

The LabVIEW+ Suite is a collection of LabVIEW plus, more software that provides purpose-built tools for automating measurement, analysis, and test. The software works together to save you time.

Part Number: 788509-35

PART NUMBERS LISTED ARE FOR SUBSCRIPTION-BASED DOWNLOADABLE MEDIA FOR WINDOWS, FIND MORE INFORMATION ONLINE OR THROUGH YOUR DISTRIBUTOR.

LABVIEW, DIADEM, FLEXLOGGER, INSTRUMENTSTUDIO, AND TESTSTAND ARE MARKS OWNED BY ONE OF THE COMPANIES IN THE TEST & MEASUREMENT BUSINESS UNIT OF EMERSON ELECTRIC CO. EMERSON AND THE EMERSON LOGO ARE TRADEMARKS AND SERVICE MARKS OF EMERSON ELECTRIC CO.

© 2024 NATIONAL INSTRUMENTS. ALL RIGHTS RESERVED.



Mess- und Prüftechnik. Die Experten.

Ihr Ansprechpartner /
Your Partner:

dataTec AG
E-Mail: info@datatec.eu
datatec.eu

