

Handheld multimeter

SEFRAM7208

SEFRAM7208: Professional performance in your pocket.

dataTec

Mess- und Prüftechnik. Die Experten.

Ihr Ansprechpartner /
Your Partner:

dataTec AG

E-Mail: info@datatec.eu

>>> www.datatec.eu

Sefram



KEY FUNCTIONS

- Compact size
- Non-contact voltage detection
- AC and DC voltages
- Resistance
- Continuity and diode test
- Built-in flashlight
- Backlit display
- 3 measurements per second
- IEC 61010 CAT III 600 V

FEATURES

- **Display:** 6000 counts
- **AC and DC voltage:** Up to 600 V
- **Resistance:** Up to 20 MΩ
- **Diode test:** Forward voltage drop display
- **Continuity test:** With buzzer
- **Screen:** 3 ½ digit LCD with polarity and low battery indicator

The SEFRAM7208 combines the compactness of a pocket multimeter with the performance of a professional device. Ideal for technicians, electricians, and installers, it provides accurate TRMS measurement up to 600 V AC, with surge protection across all measurement ranges.

Designed for reliable everyday use, it features a backlit LCD screen, LED lighting for dark areas, and non-contact voltage detection (NCV) for added safety.

Its sampling rate of 3 measurements/second ensures excellent responsiveness during field diagnostics.

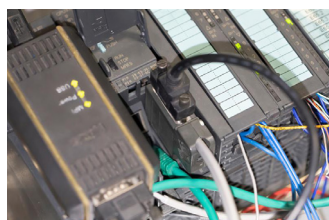
This multimeter stands out for its portability, ease of use, and ruggedness, making it a tool that is perfectly suited for installation, maintenance, or troubleshooting work, even in demanding conditions.

Thanks to its integrated test leads, light weight, ergonomic design, and two AAA battery power supply, it is always ready to use and easy to transport.

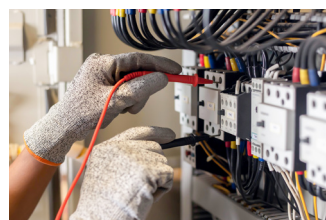
APPLICATIONS



Electrician



Technician



Maintenance



HVAC

Overview



Specifications

| Model | SEFRAM7208 |
|-----------------------|--|
| DC voltage | |
| Measurement range | 200 mV to 600 V (in 5 ranges) |
| Resolution | 0.1 mV to 1 V (in 5 ranges) |
| Basic accuracy | ± (0.8% of reading + 5 digits) |
| Input impedance | 10 MΩ |
| Maximum input voltage | 600 V DC or AC RMS |
| AC voltage | |
| Measurement range | 2 V to 600 V (in 4 ranges) |
| Resolution | 0.001 V to 1 V (in 4 ranges) |
| Basic accuracy | ± (1.2 % of reading + 5 digits) |
| Input impedance | 10 MΩ |
| Frequency | 40 Hz to 1000 Hz |
| Maximum input voltage | 600 V DC or AC RMS |
| Resistance | |
| Measurement range | 200 Ω to 20 MΩ (in 6 ranges) |
| Resolution | 0.1 Ω to 10 kΩ (in 6 ranges) |
| Basic accuracy | ± (0.8 % + 3 digits) |
| Protection | 600 V DC or AC RMS |
| Diode | |
| Range | 2 V |
| Resolution | 0.001 V |
| Test conditions | Open circuit voltage: 2.4 V The display shows the value of the forward voltage drop of the diode. |

| Model | SEFRAM7208 |
|-------------------------|--|
| Continuity | |
| Description | The device emits an audible signal when the measured resistance value is less than 35 Ω. |
| Test conditions | Test current: approximately 1 mA Open circuit voltage: 2.4 V |
| General characteristics | |
| Display | LCD type, backlit |
| | 6000 counts |
| Measurement rate | 3 measurements/s |
| Out-of-range indication | "OL" display |
| Polarity indication | The "-" symbol is automatically displayed |
| Operating temperature | 0 °C to 40 °C, HR < 80 % |
| Storage temperature | -10°C to 60°C (without batteries), RH < 70% |
| Security | CAT III 600 V |
| Standards | IEC/EN 61010-1 |
| Degree of pollution | 2 |
| Power supply | 2 AAA batteries 1.5V |
| Dimensions | 128 x 61 x 25 mm |
| Weight | 200 g |

Includes: User manual, 2 AAA batteries.



**Ihr Ansprechpartner /
Your Partner:**

dataTec AG
E-Mail: info@datatec.eu
www.datatec.eu

Mess- und Prüftechnik. Die Experten.