



DAS701

High Speed Data Acquisition Solution



The DAS701 is a High Speed Data Acquisition Solution well suited for applications ranging from small sensor signal logging (process).

With CAT III safety class, it features a wide input range (1mV to 500V), **500GB internal SSD hard drive**.

The 200µs sampling interval in file mode lets you capture some transient events safely. In addition, its large built-in memory capacity allows for data recording for long periods.

Each channel can be easily configured in wide range of parameters to record different signals.

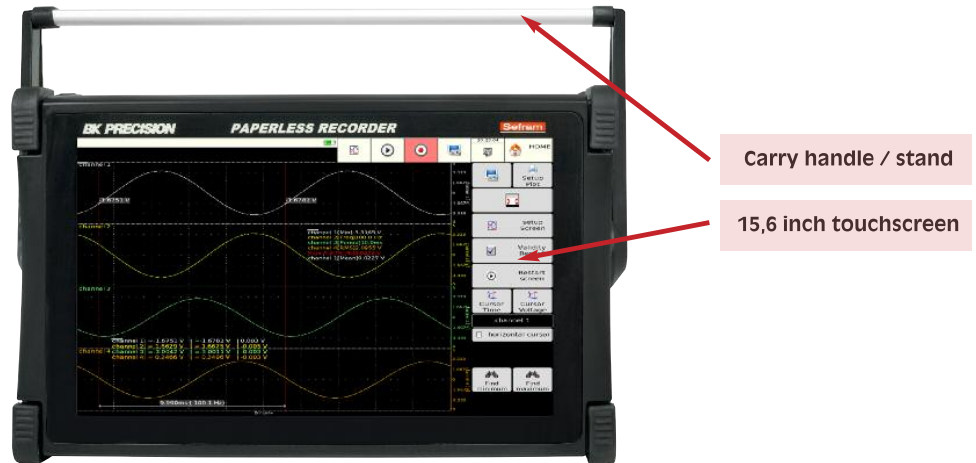
■ Features and benefits :

- Fast sampling rate: up to 5 kSa/s (200µs)
- 12 multiplexed channels
- Measure up to 50V DC voltage, temperature (thermocouple, Pt100, Pt200, Pt500, Pt1000 (2,3 and 4wires))
- 16 bit resolution
- 500GB SSD internal memory
- 16 logic input channels with power supply (12V)
- Wide 15,6 inches touchscreen TFT display
- USB and LAN interfaces
- Battery option (up to 2 hours)
- Free software for control and analysis
- Carrying case included in standard

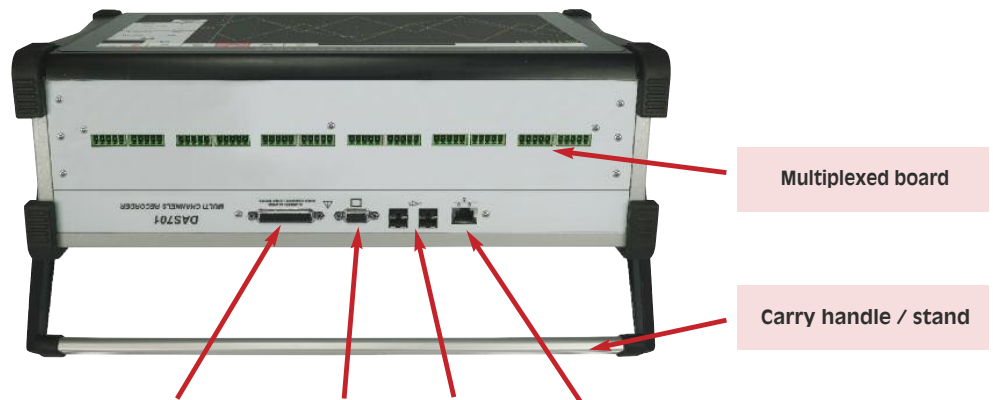
DAS701

High Speed Data Acquisition Solution

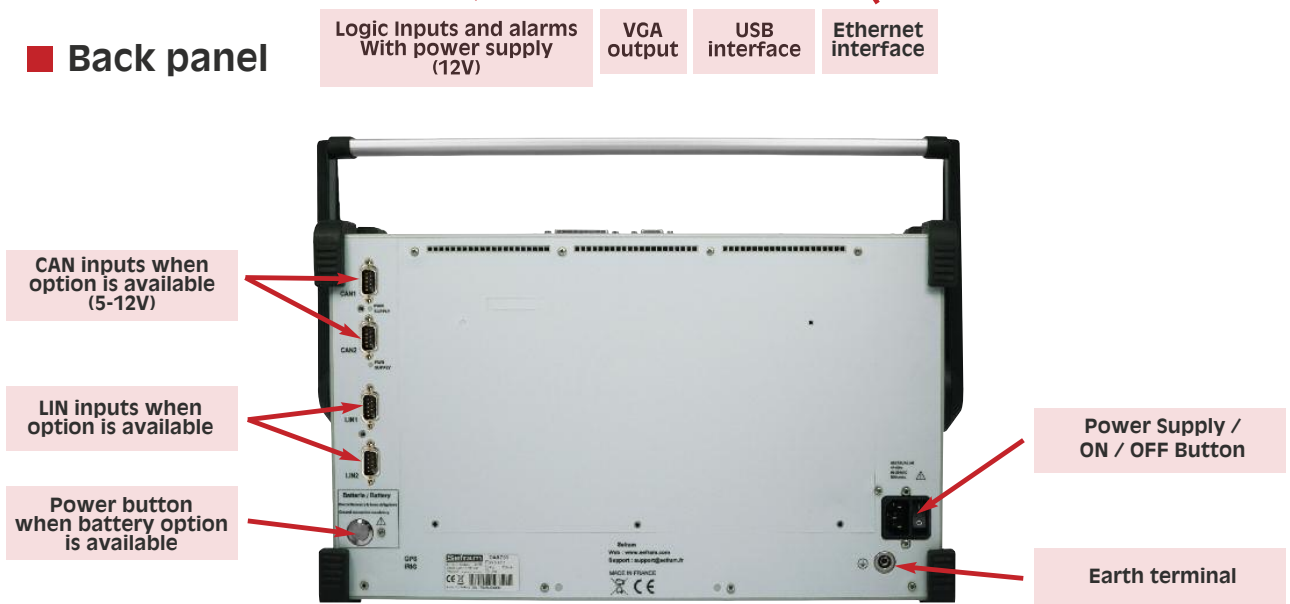
■ Front panel



■ Top panel



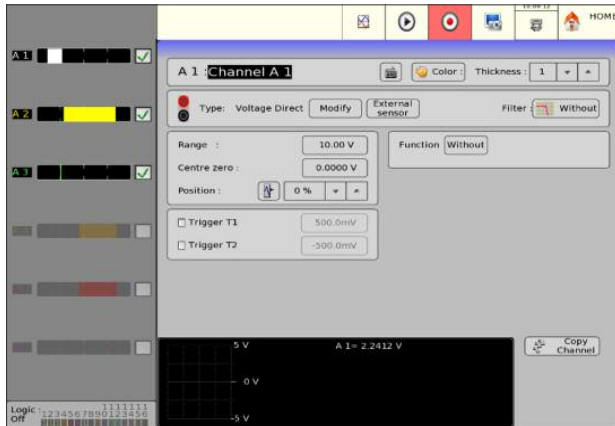
■ Back panel



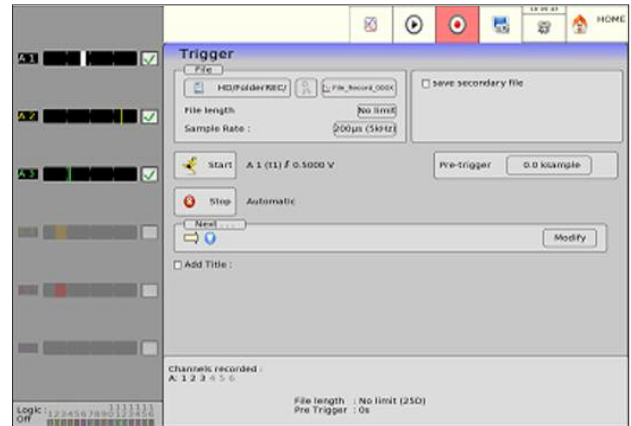
DAS701

High Speed Data Acquisition Solution

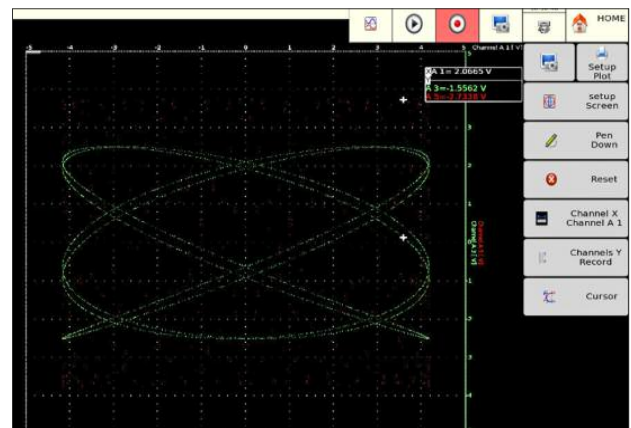
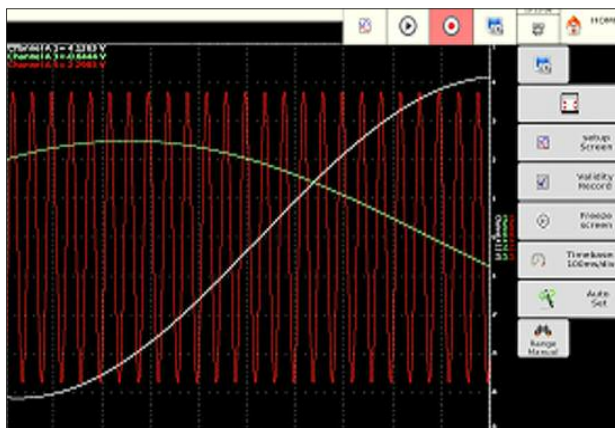
■ Operation highlights



In the same page each channel can be easily and simply prepared to record. Parameters like the type of signal to be recorded (voltage, temperature), set change unit (to convert a voltage to meters for example), the display range, shift the zero, add functions, choose the best layout for your graphics and define the trigger positions.



It is possible to set a trigger or combination of triggers to start and stop recording, for example, start your recording on a logical channel, after a delay, on an analogue channel with a threshold, on a combination of parameters.

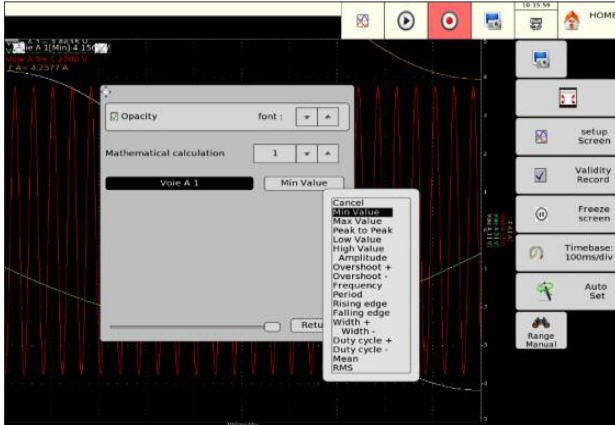


XY mode for plotting one varying signal versus another and F(t) mode like oscilloscope with 100 kHz bandwidth

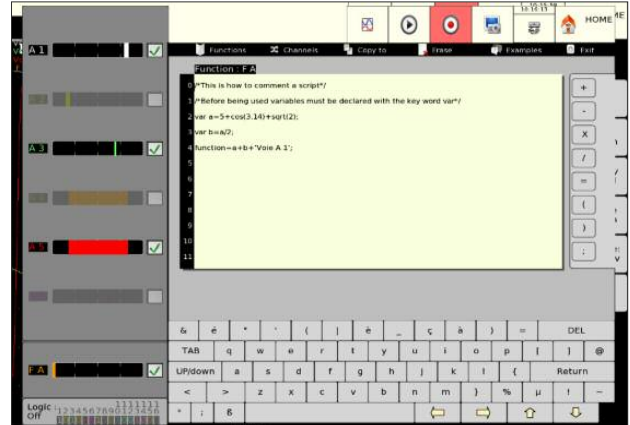
DAS701

High Speed Data Acquisition Solution

■ Operation highlights



Benefit from up to 19 calculations on the recorded channels. View the values on your graphs.



The power of the DAS701 makes it possible to perform complex mathematical calculations between the channels. Use up to 24 channels functions. These channels are calculation channels and will not decrease the number of acquisition channels. For even more complex calculations, a function editor in the script syntax language is available.

DAS701

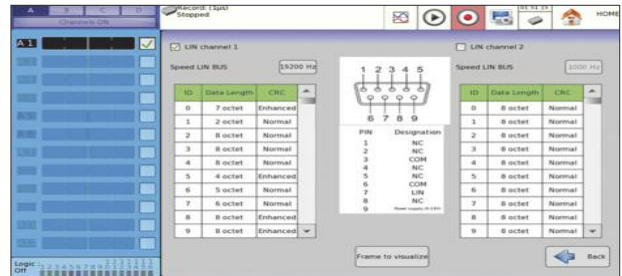
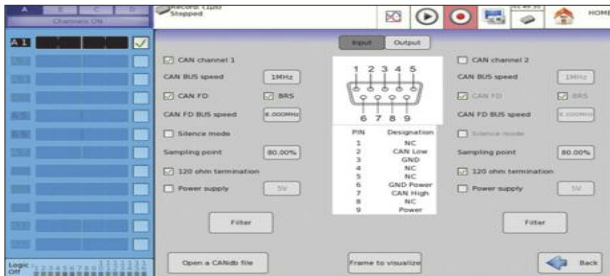
High Speed Data Acquisition Solution

CAN/LIN Mode

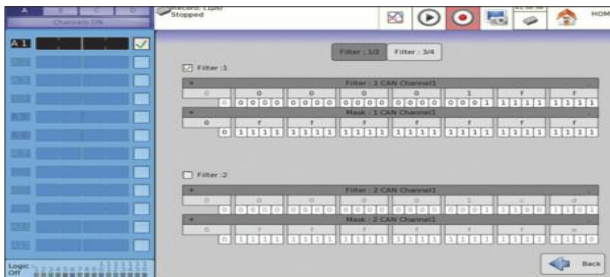
With this new feature, you can analyze the following buses:

- CAN 2.0 A / B
- CAN FD
- LIN 1.3 / 2.X

2 isolated LIN input and 2 isolated CAN channels are provided on the rear panel of the DAS701. An external 5-12V supply is available for users.



Easy and intuitive setup of all types of buses



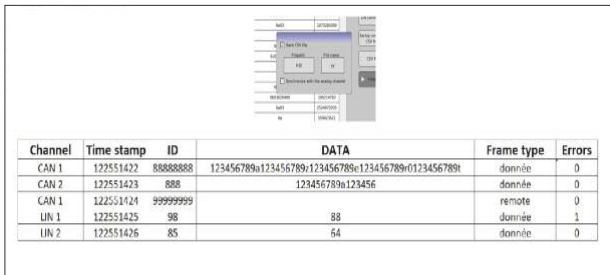
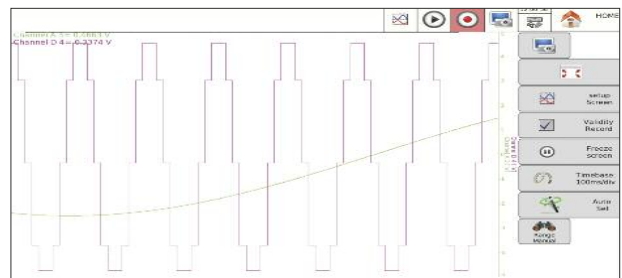
Hardware filtering of CAN frames



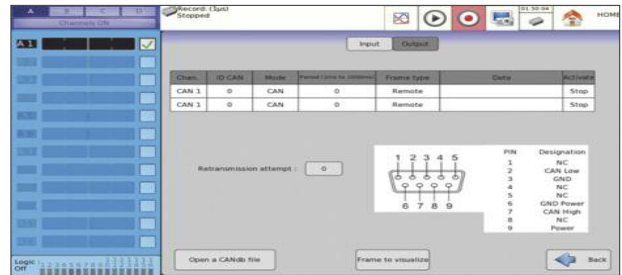
Display of complete frames of the selected bus



Graphical waveform conversion with analogue signal comparison



CAN frames recording in CSV format



Periodic frames output on the CAN bus

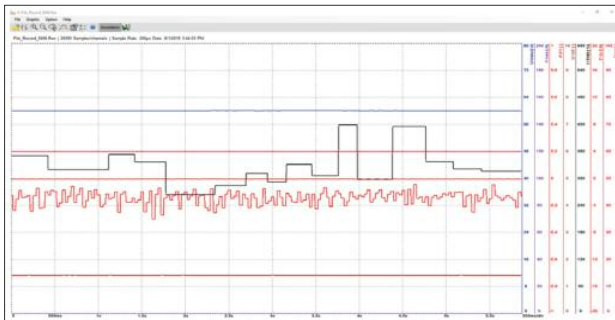
DAS701

High Speed Data Acquisition Solution

■ A complete suite of software

Several software programs are available for free to remote control the device and analyze the recorded data.

■ Analyze the data recorded

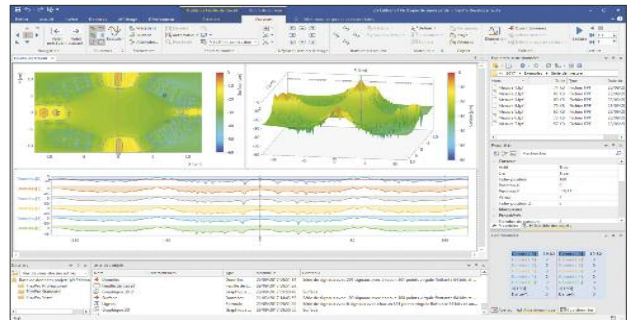


■ Sefram viewer

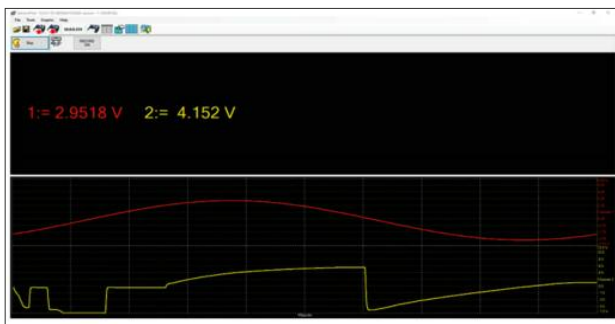
Use the free Sefram Viewer software to use and analyze all data stored on the device. Use the mathematical calculations available in the software to perform calculations after recording ($y=ax+b$, $y=\ln(x)+b$, $y=\exp(cx)+b, \dots$). With the software, also convert data saved in Excel® format or in text format for your personal post analysis.

■ Flexpro (paid software)

Use the optional Flexpro software for powerful and advanced analysis of your recordings. Perform automatic analyzes, create test reports, use more than 100 functions of statistical and math analysis, display and visualize your data in 2D and 3D, convert your files into other formats, ...



■ Remote control your device



■ Pilot Sefram

Set up your device remotely with the free Pilot Sefram software. But that's not all ! Also, view in real-time the data recorded by the device, save the current setup of the device and download the recorded data via the built-in FTP browser.

■ VNC viewer

The recorder's built-in VNC provides a graphical desktop sharing system to remotely control the instrument from a computer with a full graphical interface that replicates the instrument's front panel using a mouse and keyboard.



DAS701

High Speed Data Acquisition Solution

■ Included accessories



917007500: Carrying case for DAS700



917006010: European Power Cord
917006020: UK Power Cord
917006030: US Power Cord



917006050: Logical connector



984402100: accessories for multiplexed board

■ Optional accessories



984405500: 16 channel isolated logic adapter



984405000: Special cord for logical input



50415: Banana / BNC female adaptor



902402000: WiFi option for DAS701



989007000: 50 ohms shunt, 0.1%, 0.05A max



910007100: 0.01 ohm shunt, 1%, 3A max



910007200: 0.1 ohm shunt, 1%, 1A max



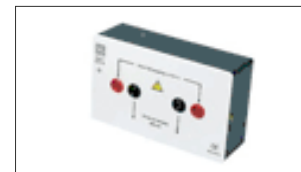
912008000: 10 ohms shunt, 0.1%, 0.15A max



989006000: 1 ohm shunt, 0.1%, 0.5A max



207030500: 0.001 ohm shunt, 0.5%, 50A max



207030301: 0.01 ohm shunt, 0.5%, 30A max



A1587: Flexible Current Clamp 3000A AC



917004000: Rackmount for DAS701

DAS701

High Speed Data Acquisition Solution

■ Aeronautic industry application



The DAS701 is used to test the behavior of the rotor motors. Thanks to his 1mV sensitivity, the records of pressure, vibration, RPM, temperature are done with an excellent accuracy. The DAS701 provides a complete test of physical and Electrical parameters which are integrated in the test report.

■ Automobile Industry



The DAS701 includes CAN BUS analysis which is the great solution for automobile application test. The user can combines CAN BUS signal analysis and physical parameters as well temperature. The large display offers the ability to display all parameters in the same time for better analysis.

■ Railway Industry application



For this application, the DAS701 is fixed in the train with his rack mounted kit. More than 12 channels are used to control and analyse the geometry of the track. The DAS701 can be connected to a printer for direct interpretation or the Sefram 8460 can be used with his thermal paper system fully integrated. The records are saved in the hard disk and or transfer by Ethernet to a computer.

DAS701

High Speed Data Acquisition Solution

■ Specifications

GENERAL FEATURES

Capacitive backlight touch screen 15,6"
Screen resolution: 1366X768
Internal hard disk memory: 500 GB SSD (up to 2 TB with option)
Memory: 128 Mwords divisible by 128 blocks
Weight: 8 kg
Dimensions (WxHxD): 271 x 472 x 154mm
Power Supply: 99 VAC to 264 VAC, 47 to 63 Hz
Consumption: 80 VA max
Operating temperature: 0 to 40°C (0 to 30°C with battery option or without fan)
Storage temperature: -20 to 60°C
Interfaces: 4 USB, 1 VGA, 1 Ethernet

MULTIPLEXED INPUT BOARD

VOLTAGE

Number of channels: 12 channels
DC Voltage range: 1 mV to 50 V
Maximum DC Voltage: 50V DC
Voltage accuracy: $\pm 0.1\%$ of range $\pm 0.1 \mu\text{V} + 0.1\%$ of offset
Input impedance: 1 M Ω for ranges $> 2 \text{ V}$ / 10 M Ω for ranges $< 2 \text{ V}$
Input capacitance: 150 pF

TEMPERATURE

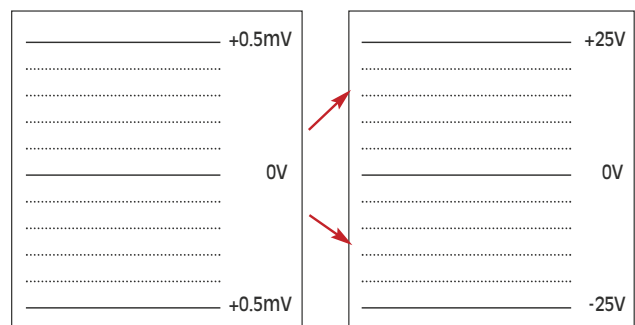
Thermocouple type: J, K, T, S, B, E, N, C, L: -250°C to 1760°C
Pt100 / Pt200 / Pt500 / Pt1000 (2, 3 and 4 wires): -200 °C to 850 °C
Cold junction compensation: $\pm 1.25 \text{ }^\circ\text{C}$

SAMPLING

Vertical resolution: 16 bits
Maximum direct voltage sampling rate: 5 kSa/s (200 μs) each channel
Digital filters setting: $< 100 \text{ Hz}$



Example with 1 mV and 50V range



■ Ordering Informations

■ Factory options

- 917003000: Battery option - with up to 2 hours of autonomy
- 917005000: IRIG option - internal clock synchronisation with an IRIG time
- 917005500: CAN / LIN Bus option
- 917009000: Without fan option for specific environments
- 917007000: 2TB memory extension
- 917005600: GPS option - internal clock synchronisation with an GPS time

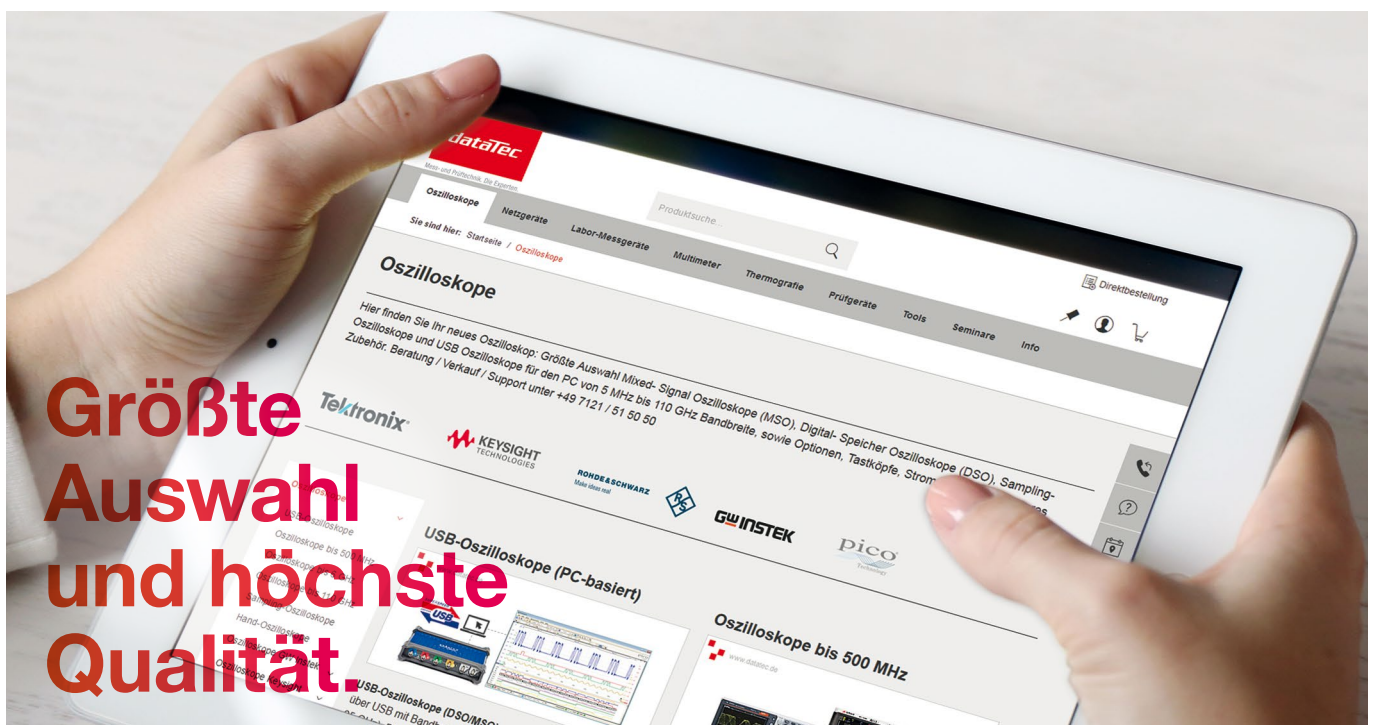
Deutschlands größter B2B-Onlineshop für Mess- und Prüftechnik.



Mess- und Prüftechnik, Die Experten.

Ihre Vorteile:

- > Eine unschlagbare Auswahl namhafter Hersteller
- > Hohe Lagerkapazität und kurze Wege
- > Bundesweite Lieferung und schnelle Zustellung meist innerhalb eines Tages
- > Mehrere tausend Mess- und Prüfgeräte
- > Tagesaktuelle Preise und Promotions
- > Warenkorbrabatt bei Online-Bestellung
- > Versandkostenfrei ab € 50,-
- > Dokumenten-Download u. v. m.



Wir haben die Lösungen für Ihre Mess- aufgaben.

dataTec

Mess- und Prüftechnik, Die Experten.

Ihre Vorteile:

- > Diplom-Ingenieure, Elektronik- und Elektrotechniker
- > Langjährige Praxiserfahrung und hohe Kompetenz
- > Bundesweit über 20 praxiserfahrene und herstellerzertifizierte Vertriebsingenieure im Außendienst bei Ihnen vor Ort

Experten für:

- > Oszilloskope
- > Spektrum- / Netzwerkanalysatoren
- > Netzgeräte / Stromversorgungen
- > Thermografie / Temperatur
- > Prüfgeräte VDE / Netzanalyse
- > u. v. m.



**Technische
Beratung
und Service.**