

ZES ZIMMER LMG600 POWER ANALYZER SERIES

Powerful. Convenient. Flexible.



LMG600 precision power analyzers provide high-accuracy power measurements for demanding test applications. The dual-path architecture enables simultaneous wide-band and narrowband analysis up to 10 MHz for reliable results without aliasing effects. The analyzers can precisely measure everything from very low power to complex multi-phase and high-power systems with configurable power channels and external sensors.

A 10.1" touchscreen with an intuitive user interface, built-in data logging and customizable menus simplifies operation and reduces setup times. The LMG600 series integrates seamlessly into automated test environments with interfaces such as Gigabit Ethernet, CAN bus and process signal I/O. Whether in R&D, validation or certification, the analyzers deliver consistent, traceable results for accurate power analysis.

Ideal for

R&D

Power electronics

Production testing

Validation lab

Key specifications

Bandwidth	analog DC up to 10 MHz
Resolution	up to 18 bit
Direct measuring ranges	3 V to 1000 V (TRMS) (up to 1500 V DC), 5 mA to 32 A (TRMS)
Maximum accuracy	0.015% + 0.01%
Number of power channels	
LMG611	1
LMG641	up to 4
LMG671 and LMG671-ATE	up to 7
Harmonics and interharmonics	up to 2000th order

Your benefit

Easy data exchange

Fits your task with barrier-free measurement

Flexible enough with the right setup for any measurement task

Features of the LMG600 series

- ▶ Collect data from any analog or digital sensor
- ▶ Plug into CAN bus to blend into automotive environment
- ▶ Continuously stream sample values for advanced post-processing
- ▶ Run our sophisticated analysis suite on captured data

- ▶ Synchronization to different frequencies on each channel group
- ▶ Focus on the relevant signal content with highly versatile filters

- ▶ 1, 4 and 7 channel versions
- ▶ Modular with four different power measurement channels that adapt to different application and testing needs
- ▶ Custom menu: create a customized screen based on the script editor

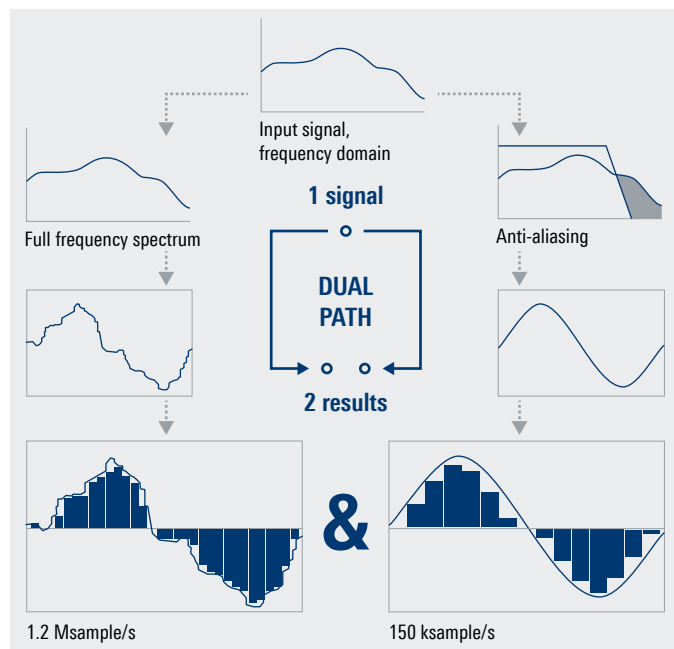


**Ihr Ansprechpartner /
Your Partner:**

dataTec AG
E-Mail: info@datatec.eu
www.datatec.eu

Dual-path architecture

Power measurement with maximum bandwidth and simultaneous aliasing-free harmonic analysis



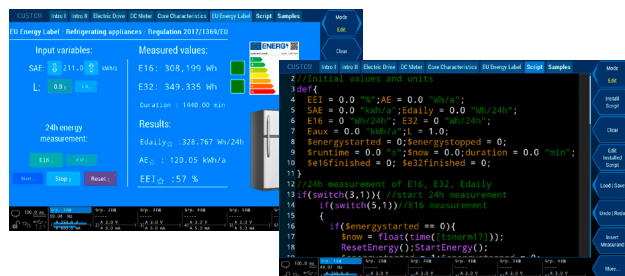
Powerful interfaces

Interfaces for full connectivity: Gigabit Ethernet, CAN bus and process signal I/O



Custom menu and script editor

Customize the content and appearance of your analysis



Flexibility: power measurement channels

	S channel	A channel	B channel	C channel
Best power accuracy	0.015% + 0.01%	0.015% + 0.01%	0.05% + 0.02%	0.03% + 0.01%
DC voltage accuracy	0.02% + 0.04%	0.02% + 0.08%	0.1% + 0.1%	0.1% + 0.1%
Resolution	18 bit	18 bit	16 bit	16 bit
Maximum voltage (RMS)	1000 V	1000 V	1000 V	1000 V
Maximum current (RMS)	32 A	32 A	32 A	32 A
Bandwidth	10 MHz	10 MHz	500 kHz	10 kHz
Dual-path architecture	•	•	•	
Voltage range extender (up to 1500 V)	•			
DC optimized	•			
Automatic zero-adjustment	•			

Ordering information

Designation	Type
Base units	
Single channel power analyzer, 10 MHz	LMG611-A
Single channel power analyzer, 500 kHz	LMG611-B
Single channel power analyzer, 10 kHz	LMG611-C
1 to 4 channel power analyzer	LMG641
1 to 7 channel power analyzer	LMG671
1 to 7 channel power analyzer, for automated test equipment (ATE)	LMG671-ATE
Measurement modules	
S channel	L60-CH-S3
A channel	L60-CH-A2
B channel	L60-CH-B3
C channel	L60-CH-C2
Voltage range extension to 1500 V, for S channel	L60-CH-S-V
Process signal interface	L6-OPT-PSI
Hardware options	
DVI interface	L6X1-DVI
CAN bus interface	L6-OPT-CAN
Internal mass storage extension to 256 Gbyte	L6X1-OPT-MSD
Software options	
Star to delta conversion	L6-OPT-SDC
LMG flicker meter, in line with EN61000-4-15	L6-OPT-FLK
Harmonic analysis of V, I, P, Q and S	L6-OPT-HRM
Sample value analysis module	L6-OPT-SPV
Event triggering	L6-OPT-EVT
Flicker CE compliance test software	LT-CE-FLK
Harmonics CE compliance test software	LT-CE-HRM
Standby power CE compliance test software	LT-CE-STBY
Extras	
2 x handles for LMG671/641/611, front	L6X1-OPT-HDL2
4 x handles for LMG671/641 front and back	L6X1-OPT-HDL4
19" rackmount kit for LMG671	L671-X-01
19" rackmount kit for LMG641	L641-X-01



Ihr Ansprechpartner /
Your Partner:

dataTec AG

E-Mail: info@datatec.eu

>>> www.datatec.eu

www.rohde-schwarz.com | www.rohde-schwarz.com/support | www.training.rohde-schwarz.com

R&S® is a registered trademark of Rohde & Schwarz GmbH & Co. KG

Trade names are trademarks of the owners

ZES ZIMMER LMG600 Power Analyzer Series

PD 3610.2717.32 | Version 01.00 | February 2026 (ch)

Data without tolerance limits is not binding | Subject to change

© 2026 Rohde & Schwarz | 81671 Munich, Germany