

dataTec

Mess- und Prüftechnik. Die Experten.

Ihr Ansprechpartner /
Your Partner:

dataTec AG
E-Mail: info@datatec.eu
>>> www.datatec.eu



Authorized
Distributor

PXI DMM Bundles

PC-based digital multi-meters with interactive measurement software

Use NI PXI DMM Bundles for

- Benchtop or distributed Validation
- Combining measurements from different instruments in one system
- Interactively exercising devices-under-test using no-code InstrumentStudio PC software



Popular Features

Scalability

Simplify your benchtop by combining instruments in a single “box”

Speed and Accuracy

1.8 MS/s digitizer mode allows high-speed sequenced measurements with accuracy down to 12ppm DC voltage (10V range)

Synchronization

PXI Switch handshaking facilitates automation and multi-instrument synchronization



Do more in one box with NI PXI

The NI PXI DMM Bundles each include a PXI DMM in a 5-slot PXI Express based measurement system that is controlled through your laptop’s Thunderbolt™ USB-C port.

Achieve high accuracy, high productivity, and higher speeds with the standard for automated test and automated measurement: NI PXI (PCI eXtensions for Instrumentation).



With the PXI DMMs, perform hand-probed, switched, and further automated DMM measurements with high accuracy and resolution. The PXI DMMs deliver fast, accurate AC/DC voltage, AC/DC current, 2- or 4- wire resistance, and frequency/period measurements, as well as diode tests. These bundles feature DMMs with up to 7.5 digits of resolution, 1000 V DC voltage range, 3 A current range and 1.8 MS/s sample rate.

| | PXIe-DMM5100 P/N: 867114-01 | PXIe-DMM5101 P/N: 867115-01 | PXIe-DMM5102 P/N: 867116-01 |
|---------------------------|---|--------------------------------|--------------------------------|
| What is Included | | | |
| Chassis | PXIe-1083 | | |
| Module | PXI-4065 | PXIe-4080 | PXIe-4081 |
| Accessories | Thunderbolt cable Power cable, US* P-1 DMM Standard Probe Set, Banana Plugs | | |
| Key Specifications | | | |
| Bus Connector | PXI Hybrid | PXI Express | PXI Express |
| Digits of Resolution | 6.5 | 6.5 | 7.5 |
| DC Voltage Range | ± 300 V | ± 300 V | ± 1000 V |
| DC Current Range | ± 1 A | ± 1 A | ± 3 A |
| Maximum Sample Rate | 3 kS/s | 1.8 MS/s | 1.8 MS/s |
| Basic DC Voltage Accuracy | 90 ppm | 25 ppm | 12 ppm |

*Check the product datasheet for part numbers with different regional power cords



Upgrade and do more with your system!

Don't be limited by vendor-defined configurations. Use the remaining 4 slots to build on top of your system and manage change. Add measurements, more channels, or new analysis routines without having to purchase a whole new instrument.

Start with these best-selling modules



P/N: 782856-03

Source Measure Unit

PXIe-4139

- 1-channel
- ± 60 V, ± 3 A DC, ± 10 A Pulsed
- 100 fA Current sensitivity
- Up to 40 W max power



P/N: 783590-02

Oscilloscope

PXIe-5105

- 8 simultaneously-sampled channels
- 12-bit vertical resolution
- 60 MHz Bandwidth
- 60 MS/s sample rate



P/N: 781056-01

Multifunction IO

PXIe-6363

- 32 Analog Input (16-bit, 2 MS/s)
- 4 Analog Output
- 48 DIO channels
- 4 32-bit counter/timers



P/N: 785114-01

Waveform Generator

PXIe-5413

- 20 MHz Bandwidth
- Up to two 16-bit channels
- 800 MS/s
- ± 12 V output range



P/N: 779647-11

Power Supply

PXIe-4110

- Two isolated channels
- Single non-isolated channel
- Up to 20 V, 1 A per channel
- Up to 46 W output power
- Hardware timing and triggering
- Output disconnect relays
- Four-wire remote sense



P/N: 780587-27

Multiplexer Switch

PXIe-2527

- 32 channel, 2-wire, 300 V, 2 A
- Electromechanical relay
- Supports 64x1 1-wire, 32x 2 2-wire, 16x1 4-wire configurations
- Onboard relay counting

Explore over 600 different PXI modules ranging from DC to mmWave.
Contact your NI product expert to get help solving your test challenges.



Select your software

Interactive Measurement with InstrumentStudio

- **Control** all your instruments in a single, intuitive no-code application software.
- **Capture** screenshots, **export** data, and **share** projects with colleagues and between systems.
- **Monitor and debug** automated test systems

[Free! – Download Now](#)

Graphical Programming in LabVIEW

- **Acquire, process, and analyze data** from NI hardware or any 3rd party instrument
- **Create interactive UIs** for test monitoring and control.
- **Save data** to .csv, .tdms, or any custom-defined binary file.

Use Your Programming Language of Choice

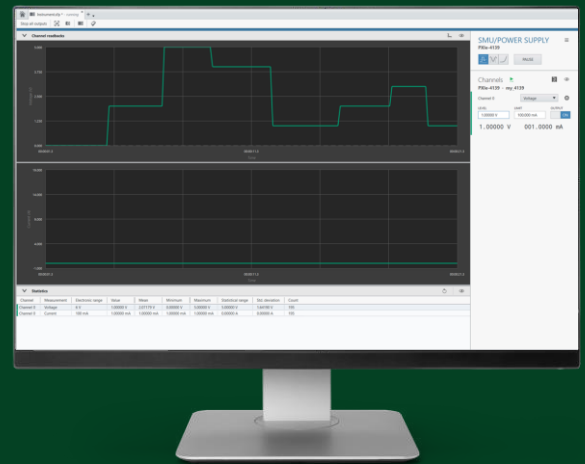
- **Drivers** for Python, C, C++, C#, .NET, and MATLAB®*

A Bundle of Software for Test

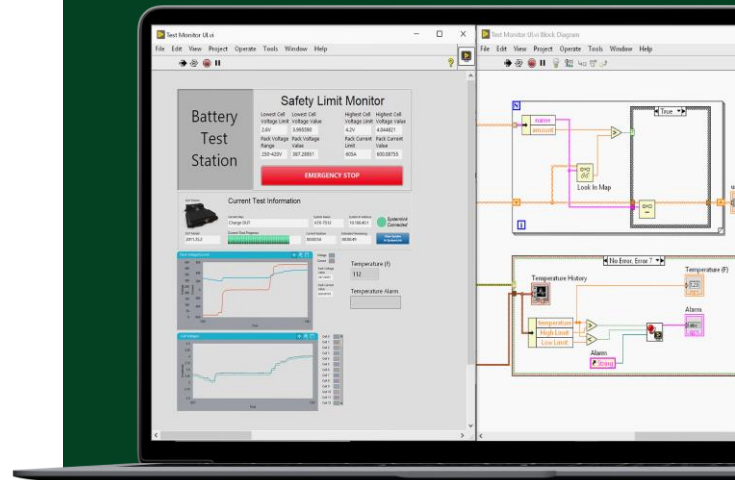
- **Develop** test systems faster with graphical programming in LabVIEW
- **Create** automated test sequences with TestStand
- **Build** web applications for test with G Web Development Software
- **Analyze** your data interactively with DIAdem
- **Perform** data acquisition and logging with FlexLogger

US Corporate Headquarters
11500 N Mopac Expwy,
Austin, TX 78759-3504
T: 512 683 0100 F: 512 683 9300
info@ni.com

MATLAB® IS A REGISTERED TRADEMARK OF THE MATHWORKS, INC. OTHER PRODUCT AND COMPANY NAMES LISTED ARE TRADEMARKS OR TRADE NAMES OF THEIR RESPECTIVE COMPANIES.



With InstrumentStudio, view data from all your instruments unified on high-resolution monitors rather than small, integrated displays.



"The move to a COTS approach using PXI and LabVIEW was critical to this production-test success at Philips. The combination of best-in-class modular hardware along with industry-standard software was pivotal to the millions of dollars and hundreds of hours saved in production test engineering"

-Neil Evans
Senior Manager, Philips

