

**dataTec**

Ihr Ansprechpartner /  
Your Partner:

dataTec AG  
E-Mail: [info@datatec.eu](mailto:info@datatec.eu)  
>>> [www.datatec.eu](http://www.datatec.eu)



Authorized  
Distributor

Mess- und Prüftechnik. Die Experten.

# PXI Multifunction I/O Bundles

PC-based multifunction I/O devices with expansion capability

## Use these bundles for

- Automated device validation
- High-channel-count test applications
- Combining measurements from different instruments in one system



## Popular Features

### Scalability

Simplify your benchtop by combining instruments in a single “box”

### Channel Density

Up to 80 analog input channels, up to 4 analog output channels, and up to 48 bi-directional digital channels in one card

### Synchronization

Multi-instrument synchronization by sharing timing and trigger signals through the PXI backplane



# Do more in one box with NI PXI

The NI PXI Multifunction I/O Bundles include a PXIe multifunction I/O module in a 5-slot PXI Express based measurement system that is controlled through your laptop's Thunderbolt™ USB-C port.

Achieve high accuracy, high productivity, and higher speeds with the standard for automated test and automated measurement: NI PXI (PCI eXtensions for Instrumentation).



The PXI multifunction I/O modules provide a mix of analog I/O, digital I/O, counter/timer, and triggering functionality in a single PXI module.

	PXIe-MI05100 P/N: 867123-01	PXIe-MI05101 P/N: 867124-01
<b>What is Included</b>		
<b>Chassis</b>	PXIe-1083	
<b>Module</b>	PXIe-6345	PXIe-6363
<b>Accessories</b>	Thunderbolt cable Power cable, US* SHC68-68-EPM Shielded Cable x 2 SCB-68A Connector Block x 2	
<b>Key Specifications</b>		
<b>Max no. of single-ended Analog Input channels</b>	80	32
<b>Max Sample Rate</b>	500 kS/s	2 MS/s
<b>Analog Input Resolution</b>	16 bits	16 bits
<b>No. of Analog Output channels</b>	2	4
<b>Max Update Rate</b>	2.86 MS/s	2.86 MS/s
<b>No. of Bidirectional digital channels</b>	24	48

\*Check the product datasheet for part numbers with different regional power cords



# Upgrade and do more with your system!

Don't be limited by vendor-defined configurations. Use the remaining 4 slots to build on top of your system and manage change. Add measurements, more channels, or new analysis routines without having to purchase a whole new instrument.

## Start with these best-selling modules



P/N: 783129-01

### Digital Multimeter

#### PXIe-4080

- 6 ½ digit,  $\pm 300$  V,  $\pm 1$  A
- 2- or 4-wire resistance measurements up to  $5\text{ G}\Omega$
- Isolated Digitizer mode - Up to 1.8 MS/s
- Frequency/period measurements
- Diode tests



P/N: 783590-02

### Oscilloscope

#### PXIe-5105

- 8 simultaneously-sampled channels
- 12-bit vertical resolution
- 60 MHz Bandwidth
- 60 MS/s sample rate



P/N: 782856-03

### Source Measure Unit

#### PXIe-4139

- 1-channel
- $\pm 60$  V,  $\pm 3$  A DC,  $\pm 10$  A Pulsed
- 100 fA Current sensitivity
- Up to 40 W max power



P/N: 785114-01

### Waveform Generator

#### PXIe-5413

- 20 MHz Bandwidth
- Up to two 16-bit channels
- 800 MS/s
- $\pm 12$  V output range



P/N: 779647-11

### Power Supply

#### PXIe-4110

- Two isolated channels
- Single non-isolated channel
- Up to 20 V, 1 A per channel
- Up to 46 W output power
- Hardware timing and triggering
- Output disconnect relays
- Four-wire remote sense



P/N: 780587-27

### Multiplexer Switch

#### PXIe-2527

- 32 channel, 2-wire, 300 V, 2 A
- Electromechanical relay
- Supports 64x1 1-wire, 32x 2 2-wire, 16x1 4-wire configurations
- Onboard relay counting

Explore over 600 different PXI modules ranging from DC to mmWave.  
Contact your NI product expert to get help solving your test challenges.

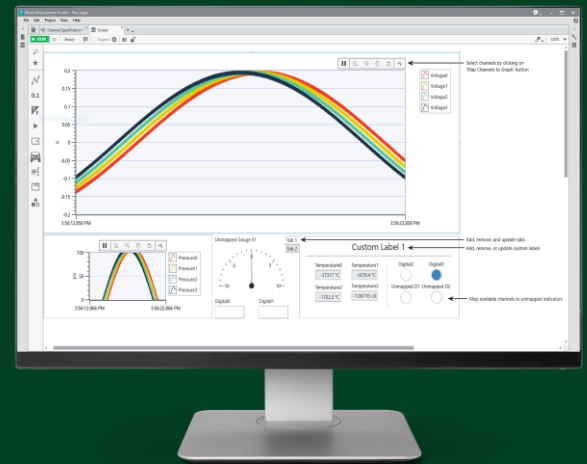


# Select your software

## Interactive Measurement with FlexLogger

- **Acquire** data from instruments in an intuitive no-code application software.
- **View** test with customizable dashboards, **save** data, and **analyze** with inline calculations.
- **Set** alarms to be notified of unexpected behavior

[Free Trial – Download](#)



FlexLogger – Fast, Flexible, No-Code Software

## Graphical Programming in LabVIEW

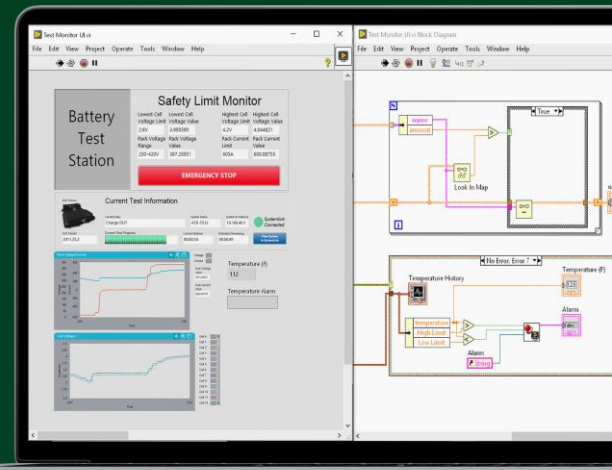
- **Acquire, process, and analyze data** from NI hardware or any 3<sup>rd</sup> party instrument
- **Create interactive UIs** for test monitoring and control.
- **Save data** to .csv, .tdms, or any custom-defined binary file.

## Use Your Programming Language of Choice

- **Drivers** for Python, C, C++, C#, .NET, and MATLAB®\*

## A Bundle of Software for Test

- **Develop** test systems faster with graphical programming in LabVIEW
- **Create** automated test sequences with TestStand
- **Build** web applications for test with G Web Development Software
- **Analyze** your data interactively with DIAdem
- **Perform** data acquisition and logging with FlexLogger



"The move to a COTS approach using PXI and LabVIEW was critical to this production-test success at Philips. The combination of best-in-class modular hardware along with industry-standard software was pivotal to the millions of dollars and hundreds of hours saved in production test engineering"

-Neil Evans  
Senior Manager, Philips

US Corporate Headquarters  
11500 N Mopac Expwy,  
Austin, TX 78759-3504  
T: 512 683 0100 F: 512 683 9300  
info@ni.com

MATLAB® IS A REGISTERED TRADEMARK OF THE MATHWORKS, INC. OTHER PRODUCT AND COMPANY NAMES LISTED ARE TRADEMARKS OR TRADE NAMES OF THEIR RESPECTIVE COMPANIES.

